

Central Sussex NHS Commissioning Alliance

Brighton and Hove CCG

Crawley CCG

High Weald Lewes Havens CCG

Horsham and Mid Sussex CCG

Goal

- Take control of and lead the system by being stronger commissioners to deliver better outcomes for our population
- Enable the development of new local models of care (e.g. accountable care systems)

The Alliance is needed

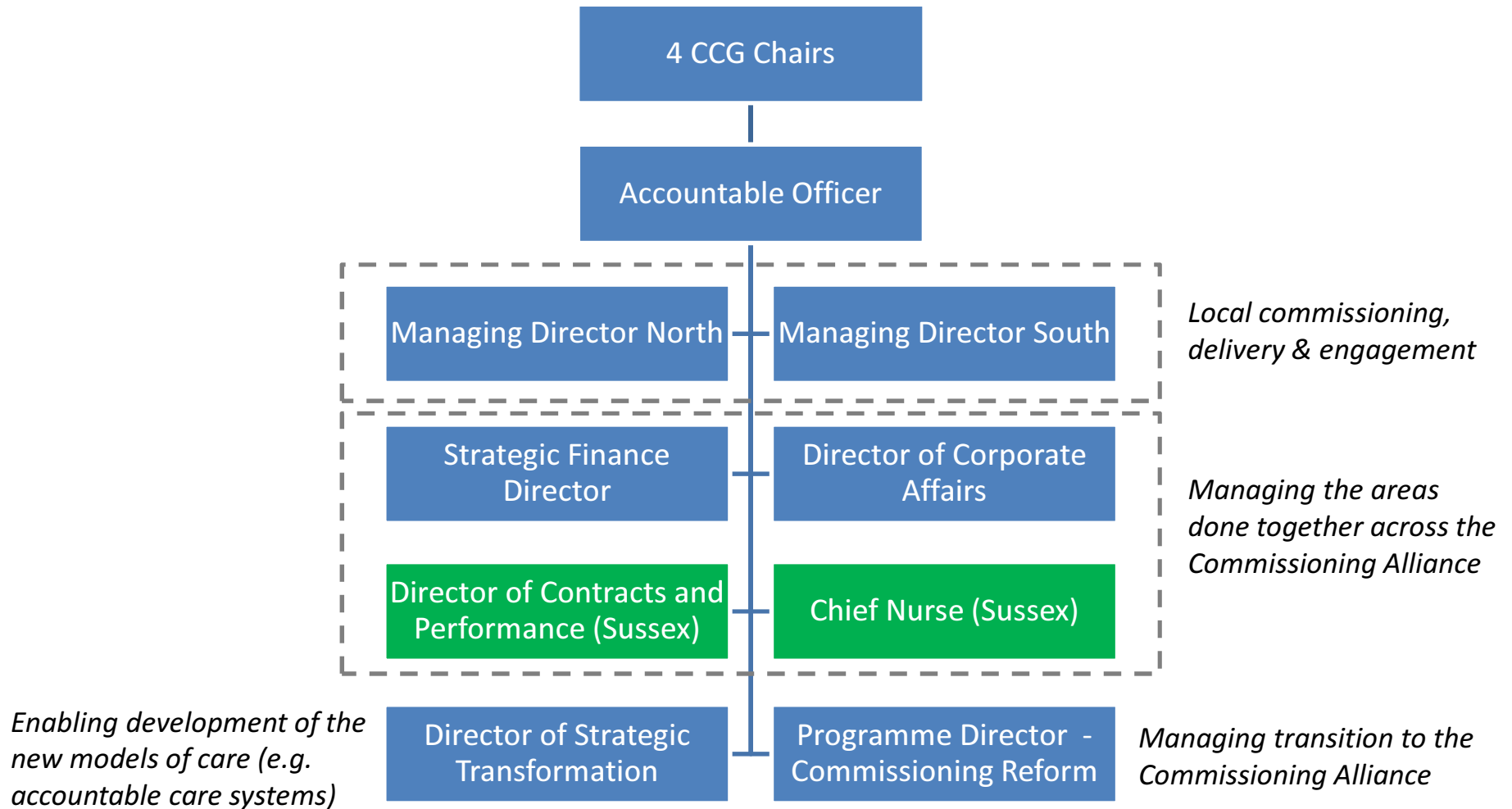
- To get a stronger traction with the providers of healthcare for our population
- To provide clarity for providers through a single commissioning voice
- To free-up local teams to allow them to give more focus to business as usual and integration
- To share and spread clinical service improvements through collaboration (we have more in common than we think)
- To accelerate the pace of delivering transformational change and new local models of care (e.g. accountable care systems)
- To streamline processes and stop duplication across the four CCGs that could be done once
- To better use the limited specialist skills and talent
- To provide more effective organisational development at scale

It is needed now

The system is at a tipping point and many of the problems need to be addressed through stronger collaboration between the CCGs

- There is a deteriorating financial situation that needs to be addressed collectively and consistently through transformation at scale.
- Our relationship with our major providers needs a reset
- We need to have honest conversations with the public about what the NHS is able to continue to provide, and we need to do this in a consistent and joined-up way
- There are workforce gaps that we are struggling to fill with the right talent
- Other systems are coming together (in line with the national direction of travel) and could look more attractive for people to work
- Leadership teams across the CCGs are strongly aligned and motivated to address the challenge

Initial Executive management structure



Scale of delivery of functions

STP level commissioning

Quality

Contracts and Performance

Specialised commissioning

Commissioning Support Unit

Done together through the Alliance

Planning (Annual, operating, finance)

Assurance (strategy, finance, quality, performance)

Large scale commissioning

Strategy coordination

Back office functions

Enabling large scale transformation

Place / CCG

Population based commissioning

Joint commissioning & integration with LAs

Primary care commissioning

QIPP delivery and service transformation

Clinical engagement & pathway development

Continuing Healthcare

Staff processes

- No redundancies are expected at this time from the development of the Alliance
- Staff have been informed throughout and are already starting to collaborate between CCGs on specific areas (operational planning, comms)
- Executive team will be appointed during Q3
- Alliance starts in January and staff will then be involved in the design of new structures
- If necessary, formal consultations in Q1 2018/19
- Expected that it may require some changes in management or location

